

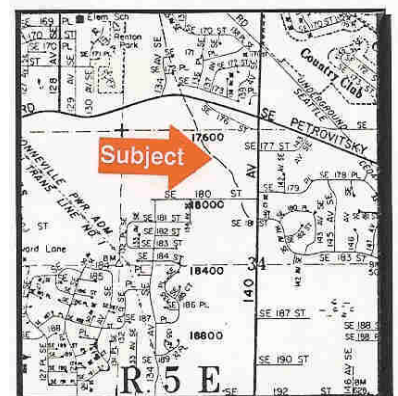
LAND FOR SALE



14000 S.E. PETROVITSKY ROAD RENTON, WASHINGTON

REAL ESTATE INVESTMENT PROPERTY

- ❖ Approximately 14.87 Acres (647, 737 SF Total)
- ❖ Lot 35: Approximately 9.99 Acres (435,164 SF Total)
- ❖ Lot 61: Approximately 4.88 Acres (212,573 SF Total)
- ❖ R-6-P: Residential Zoning (Unincorporated King County)
- ❖ All Utilities to Site
- ❖ Easy Access to I-405 and SR-167
- ❖ **Sale Price: \$1,200,000**



Exclusive Sales Agent:

ERIC SCOTT MITCHELL
Phone: (425) 746-7777 or (206) 575-9394

ESM PROPERTIES, INC.

15100 S.E. 38th St., #792
Bellevue, WA 98006